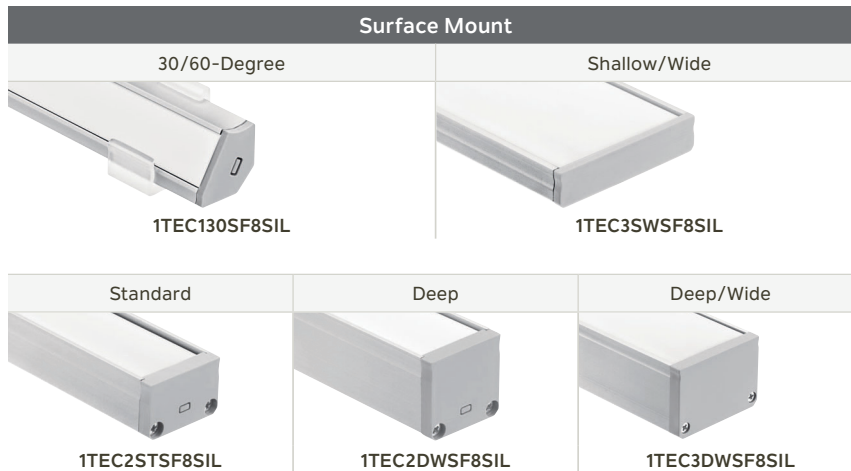


Enhanced Series – 8ft Length; Components À La Carte

Surface Mount

These channels install onto a surface to create sturdy under-cabinet, shelving or even step lighting. Miter cut and connect for custom shapes.

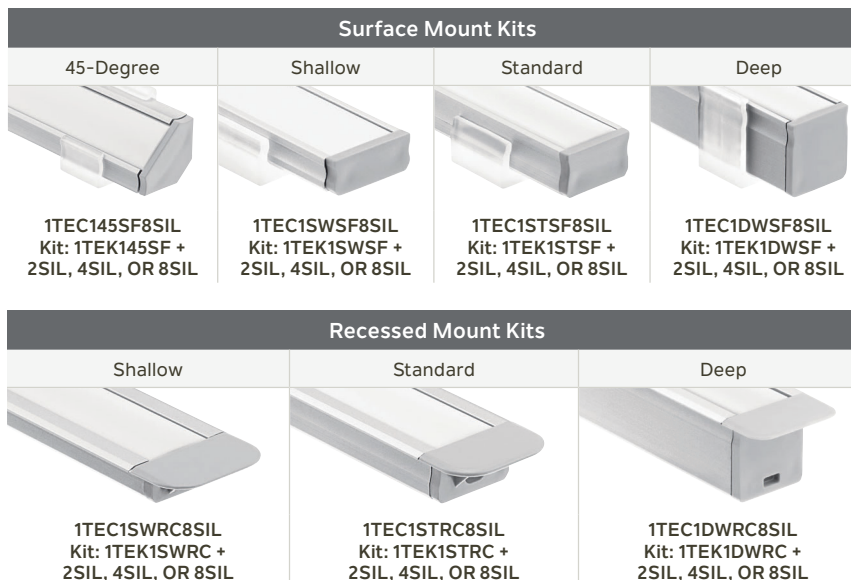


Recessed Mount

By creating space within drywall, shelving or other surfaces, recessed channels can then be inset for a seamless, built-in lighting effect. Miter cut and connect for custom shapes.



Standard Series – 8ft Length À La Carte; 2, 4, & 8ft Kits



Kichler Lighting now offers aluminum extruded channels to make it easier to design with light.

The Pro Series (page 108) allows you to integrate light into ceilings, walls and floors and create unique, and often unexpected, lighting effects.

The Enhanced Series (page 109, top) may seem like a straightforward collection of channels, however wider widths and varying depths take your lighting from accent to ambient.

The Standard Series (page 109, bottom) lives up to its name for standard accent lighting installations. The series offers an array of ordering options, including kits that come with the lens, mounting clips and end caps.

Although the Standard Series is the only group offered in kits, all three series can be ordered a-la-carte to create your ideal channel assembly.

Kichler® TE Series Channels:

- Are designed to hold LED tape light – Standard and High output 8T, 6T and 4T models (Tape sold separately).
- Come in varying widths and depths to create a desired end effect.
- Have both Surface and Recessed mount options – look for SF or RC in model number.
- Pair with lenses, end caps, mounting clips, and accessories for a polished look.
- Can be trimmed to unique lengths and shapes.
- Can be paired with the suspension cable (most models) to create a unique pendant.

For inspiration plus coordinating lenses, end caps, mounting clips and accessories, visit the Kichler.com Tape and Channels section.